

RESPIRO R8 compact



Technical data

| | <i>RESPIRO</i> <i>R8 compact</i> | <i>RESPIRO</i> <i>R9 profi</i> |
|------------------------------------|-------------------------------------|-----------------------------------|
| Working width center swath [m(ft)] | 6.50 - 8.00 (21.3 - 26.2) | 7.50 - 9.00 (24.6 - 29.5) |
| Swath width [m(ft)] | 0.50 - 2.00 (1.7 - 6.5) | 0.50 - 2.00 (1.7 - 6.5) |
| Working width side swath [m(ft)] | 6.00 (19.7) + Schwad | 7.00 (23) + Schwad |
| Belt width [mm(in)] | 1000 (40") | 1000 (40") |
| Transport length [m(ft)] | 5.60 (18.37) | 6.40 (21) |
| Transport width [m(ft)] | 2.92 (9.58) | 2.96 (9.7) |
| Transport height [m(ft)] | 3.40 (11.15) | 3.95 (12.96) |
| Weight [kg] | 4320 | 6600 |
| Tyres | 380/55-17 | 550/45-22.5 |
| Area performance [ha/h] | 3 - 8 | 4 - 10 |
| PTO [rpm] | 540 | 1000 |
| Hydraulic connections required | 2 EW + LS | 2 DW + LS |
| Electric connections required | ISOBUS, 7-polig | ISOBUS, 7-polig |
| Brake | - / hydr. / DLB | hydr. / DLB |

Headstock / connections

- Lower link rocker cat. II
- 90° steering angle for tractors up to 2.8 m tyre outside width
- PTO shaft rack
- Hose rack
- Smaller distance UL to vertical pivot axis than R9
 - Slightly less steering movement in the corners of the field
 - Lower forces on the tractor (transverse thrust)
 - Greater safety during road transport
 - shorter overall length (compact)

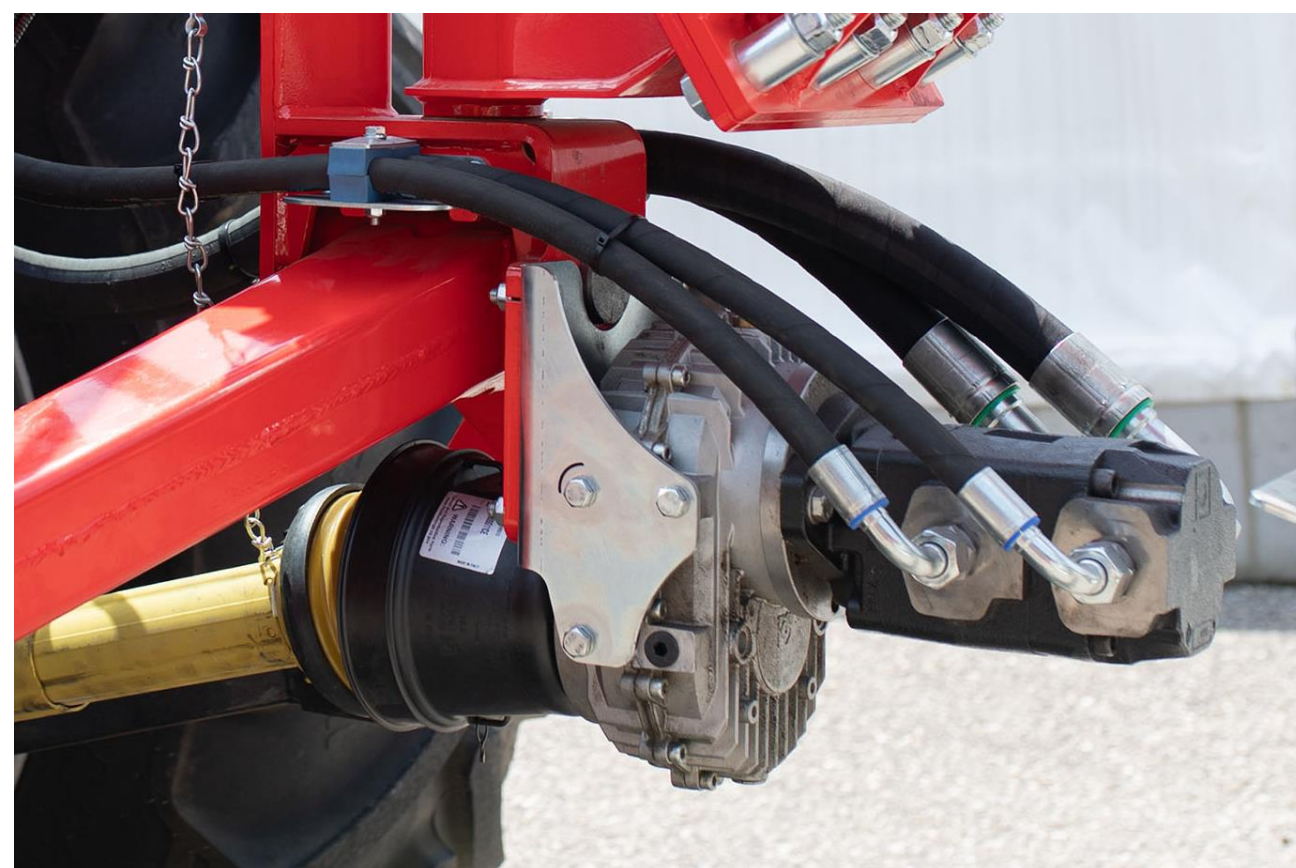
Connections

- LS
- 2x SA
- ISOBUS
- 7-pole
- Air brakes



Transmission / on board hydraulics

- Gear pump with transmission – pick-up speed depending on tractor PTO speed
- 540 / 750 / (1000) rpm
- Belt speed and direction adjustable from the cab via belt valve
- Oil tank in frame with 180 litres
- Oil cooler for low oil temperature – protection of hydraulic components



Pickup

- 380 mm PU diameter - longer blue tines
- 6-row
- Double bearing NEW - hexagonal shaft plasma nitrided to the outside
- Flexible pick-up divided into 3 yokes
- Special scraper at yoke joint - no enlargement of the gap!
- Robalon scraper with spoiler shape - open to the rear - no barrier - improved crop flow - perfect swath shape
- New transition scraper conveyor belt for unimpeded crop cross-flow
- Pick-up side cover with Robalon scraper and opening



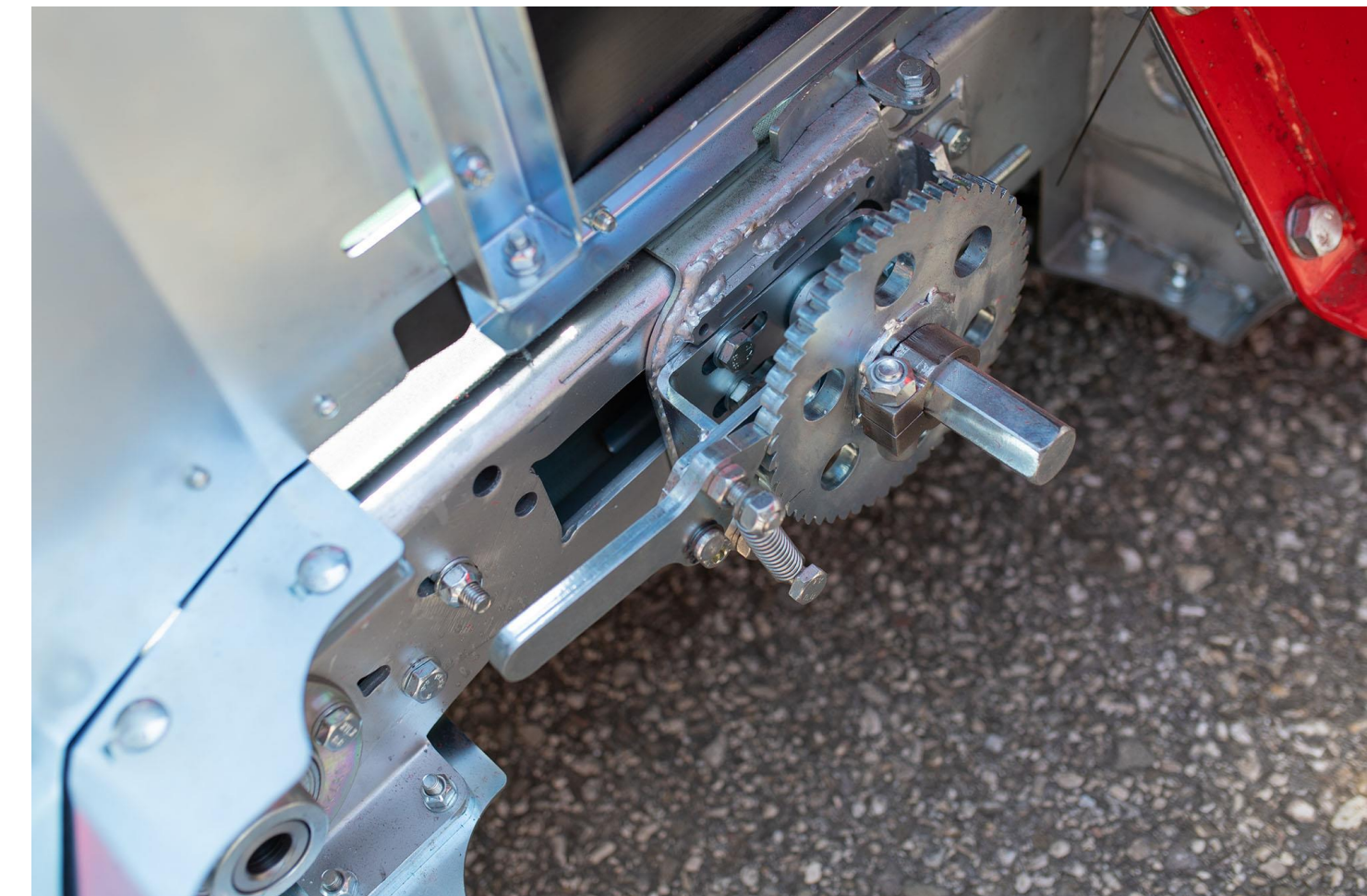
Rotor

- Closed housing (lighter)
- Optimised scraper shape (new tool from....) - Rotor tines are engaged longer to ensure better forage flow
- Central, middle adjustment of the swath roller
- Robalon intake element
- Rotor arm tube bend - elegant shape, simple
- Rotor height adjustment NEW



Belt substructure

- Rough belt tensioning on the outside of the working unit
- Quick untensioning possible, very easy to handle
- Fine adjustment on both sides only from the rear (easy access)
- New belt seal
- Proven lateral guidance via guide rails
- Original belt continuous
- NEW bearing
- Hydraulic motor sits on shaft and has spring-loaded torque support
- Back with PE1000
- Back outlet curved made of PE1000 - for better glide



Suspension working unit

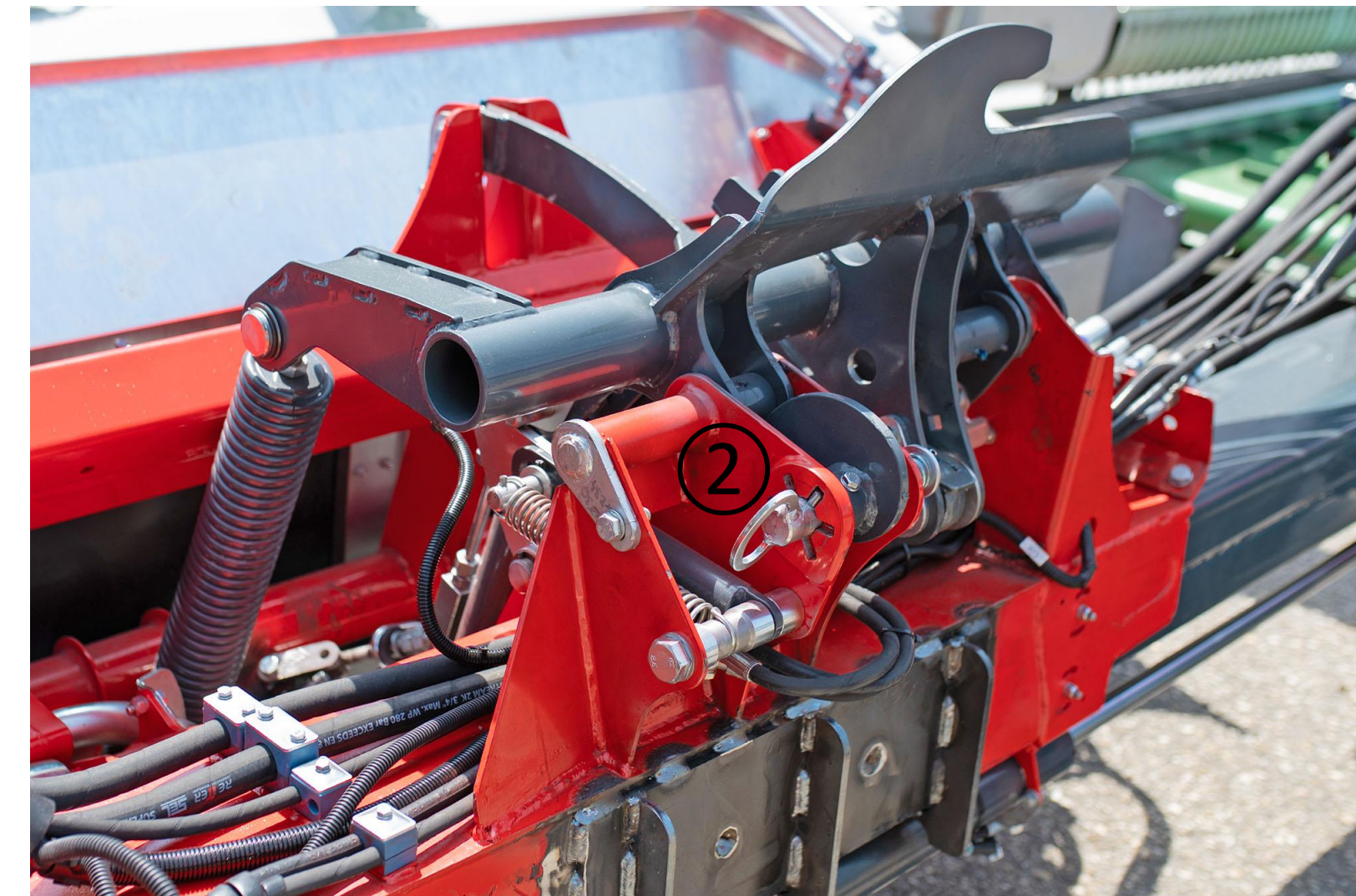
- roller system with fixed top link - short overall length
- Fixed transverse link holds the unit
- Contour adjustment in longitudinal and transverse direction - rake height remains constant
- Quick-reaction unloading via springs
- Lifting via sa cylinder by means of chains
- Lifting height at headland target 650 mm
- Sensor for automatic belt stop



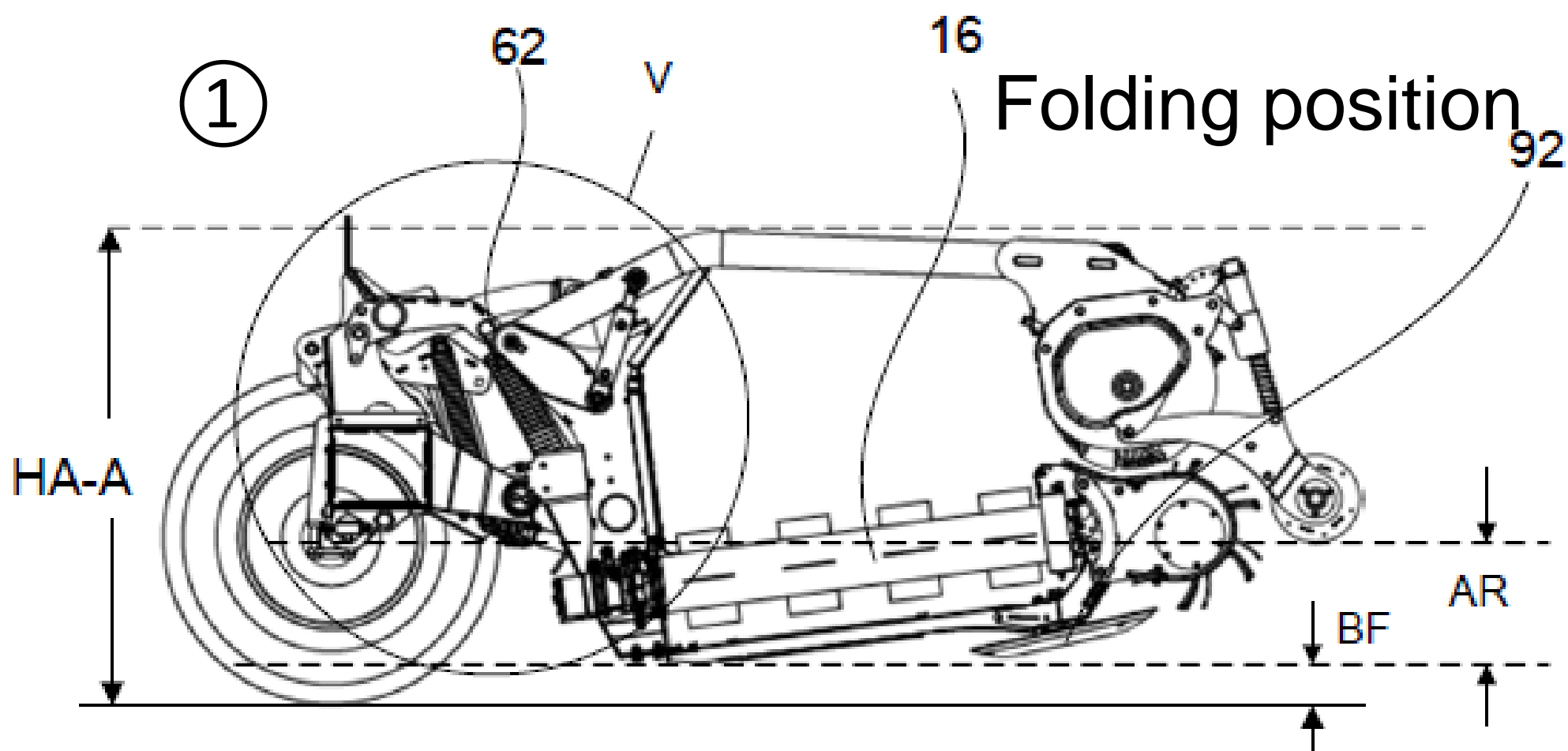
Hydraulic spring tensioner

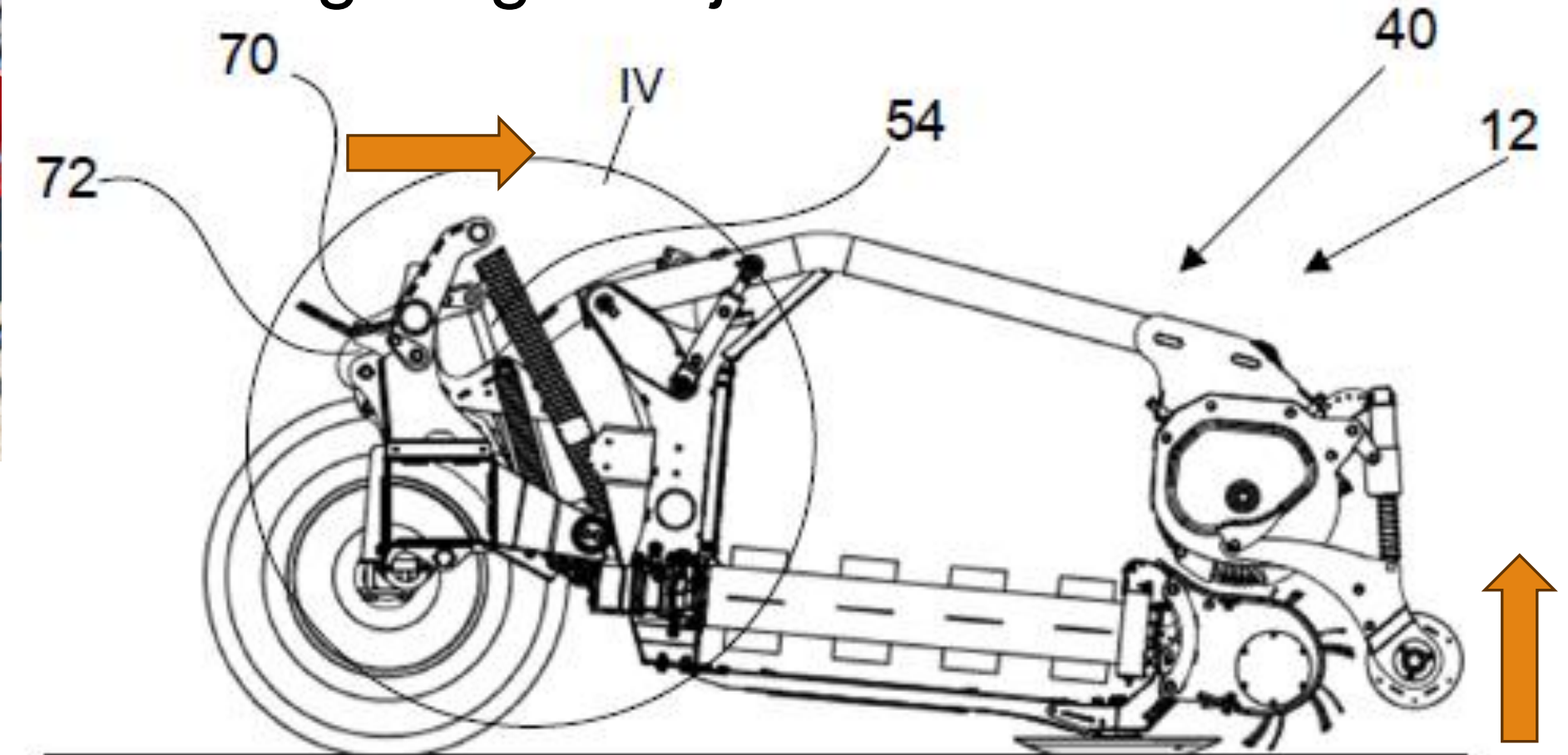
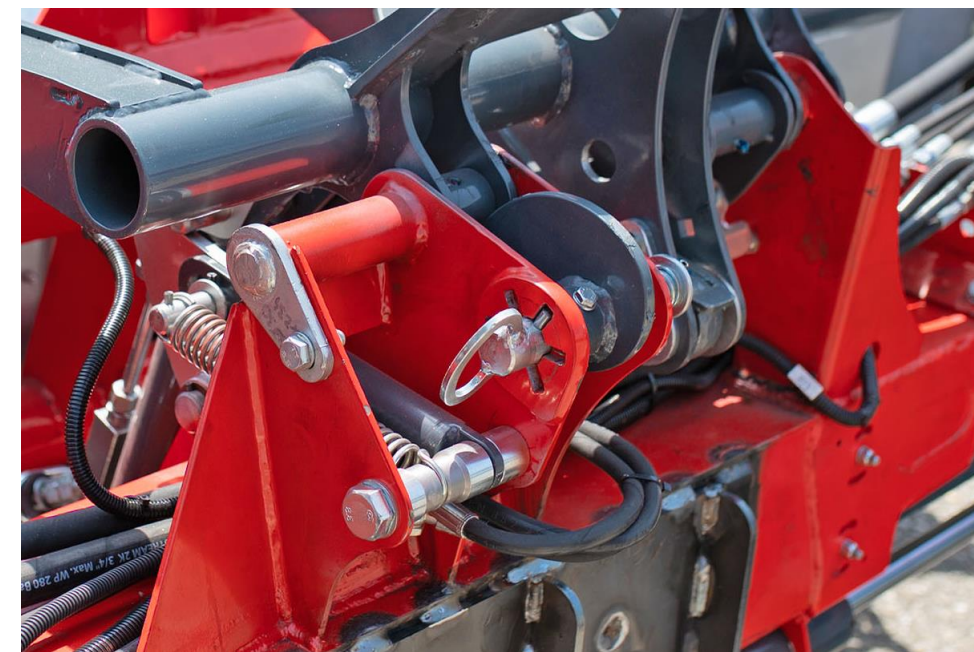
5 functions:

- Easy folding position without raising the tractor's lifting gear ①
- Simultaneous locking of the working units to the slide
- Springs are released at the same time
- Locking for transport - transport hook
- Integrated rake height adjustment ②



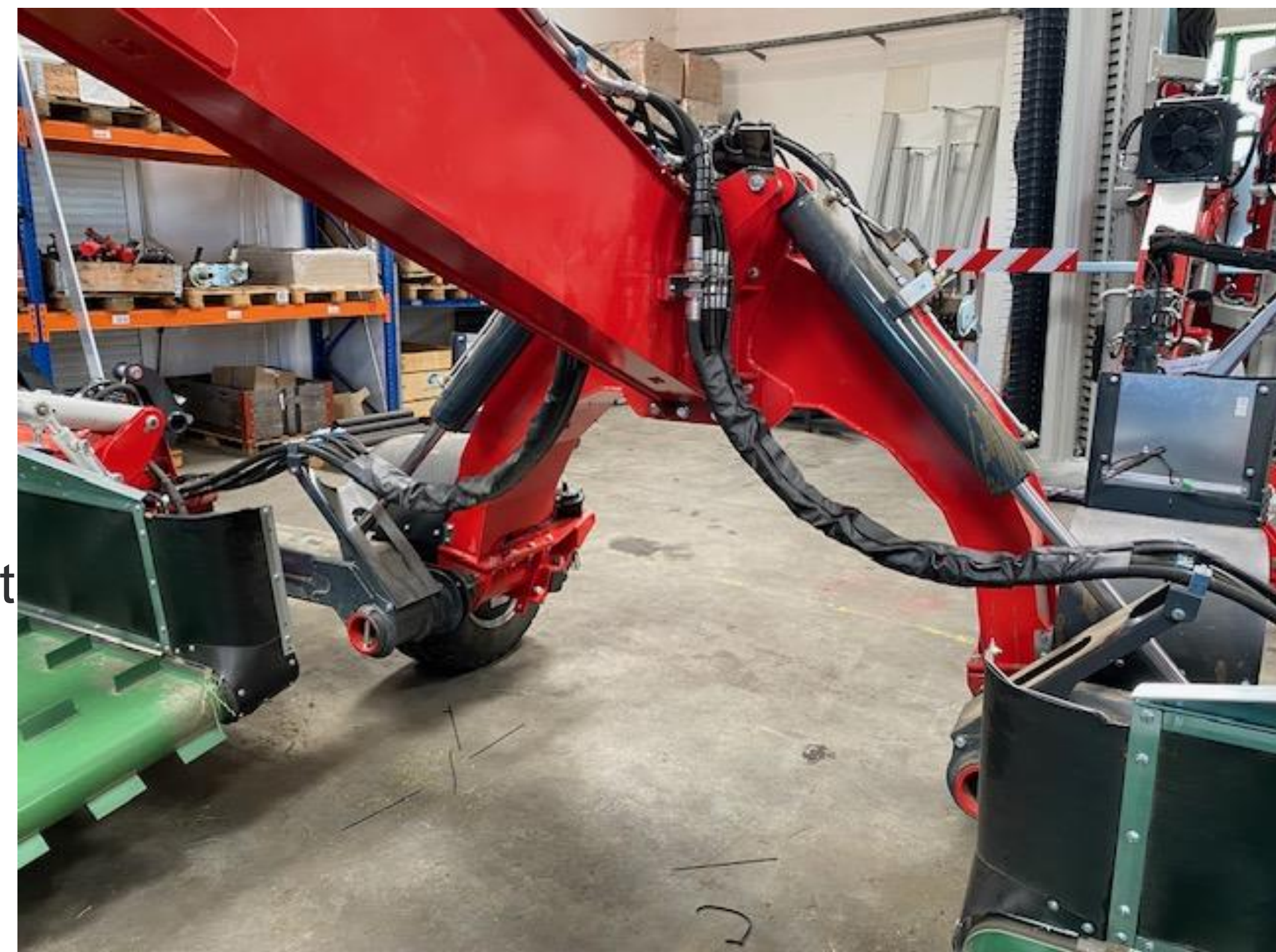
Patent pending





Power chain

- Simple and "straightforward"
- Ideal combination of folding and telescoping movement work and when locking



4-wheel chassis - proven and safe

- Tyres 380/55-17 → to be made larger for the pre-series
- Air brakes / hydraulic
- Mudguards
- Lighting
- Working lights
- Working width adjustment via telescope
- Raised passage 1.2 m
- 1.6 m clear width



Transport

Compact transport

- 5.6 x 3.4 x 2.90 m



Swath placement silage



Swath placement hay



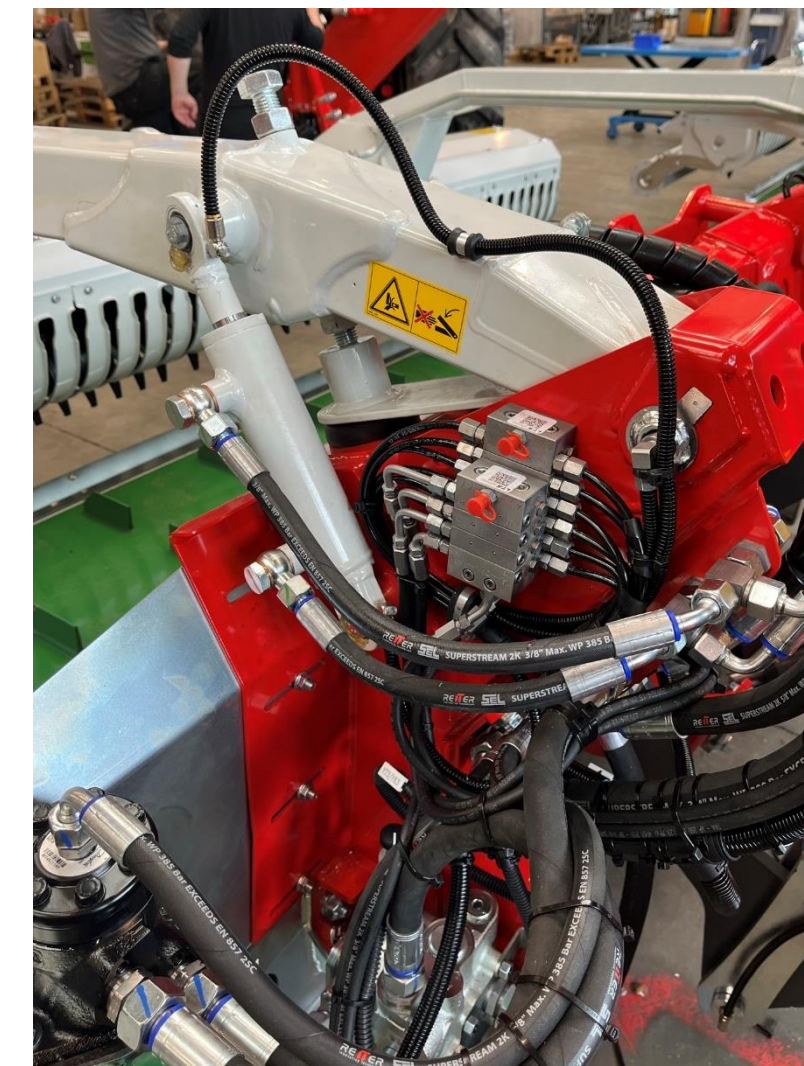
Market launch

First presentation Agritechnica 2023

Pre-series 2024

Additional options for RESPIRO R9:

- Vertical belt for heavy gras conditions
- Automatic central lubrication system





RESPIRO – Pastures, animals,
machines and men respire